

**LMF-E**  
**LMK-E**

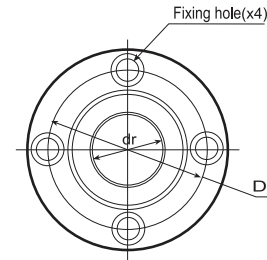
Pilot Type (Metric Dimension)



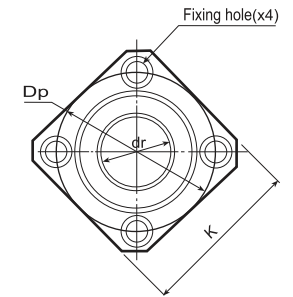
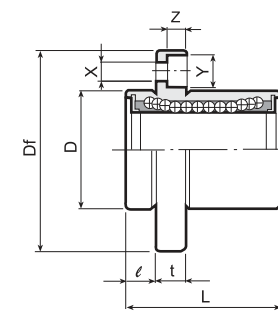
LMF...UU-E



LMK...UU-E



LMF...UU-E



LMK...UU-E

Nominal shaft diameter mm	Model No.		Main dimensions and tolerance						Flange	
	LMF...UU-E LMK...UU-E	mm	dr		D		L		l mm	Df mm
			mm	Tolerance μm	mm	Tolerance μm	mm	Tolerance mm		
6	LMF6UU-E	6	12	0	19	±0.3	5	28	8	32
	LMK6UU-E									
8	LMF8UU-E	8	15	-13	24	±0.3	5	32	8	32
	LMK8UU-E									
10	LMF10UU-E	10	19	0	29	±0.3	6	40	10	40
	LMK10UU-E									
12	LMF12UU-E	12	21	0	30	±0.3	6	42	10	42
	LMK12UU-E									
13	LMF13UU-E	13	23	-16	32	±0.3	6	43	10	43
	LMK13UU-E									
16	LMF16UU-E	16	28	0	37	±0.3	6	48	10	48
	LMK16UU-E									
20	LMF20UU-E	20	32	0	42	±0.3	8	54	10	54
	LMK20UU-E									
25	LMF25UU-E	25	40	-10	59	±0.3	8	62	10	62
	LMK25UU-E									
30	LMF30UU-E	30	45	-19	64	±0.3	10	74	10	74
	LMK30UU-E									
35	LMF35UU-E	35	52	0	70	±0.3	10	82	10	82
	LMK35UU-E									
40	LMF40UU-E	40	60	-22	80	±0.3	13	96	10	96
	LMK40UU-E									
50	LMF50UU-E	50	80	0	100	±0.3	13	116	10	116
	LMK50UU-E									
60	LMF60UU-E	60	90	-15	110	±0.3	18	134	10	134
	LMK60UU-E									

Main dimensions and tolerance						Eccentricity μm	Squareness μm	Basic load rating		Weight g	Nominal shaft diameter mm
Flange								dynamic C(kgf)	static Co(kgf)		
K mm	t mm	Dp mm	X mm	Y mm	Z mm						
—	—	—	—	—	—	15	15	21	27	24 18	6
22	5	20	3.5	6	3.1						
—	—	—	—	—	—			28	40	37 29	8
25	5	24	3.5	6	3.1						
—	—	—	—	—	—			38	56	72 52	10
30	6	29	4.5	7.5	4.1						
—	—	—	—	—	—			52	80	76 57	12
32	6	32	4.5	7.5	4.1						
—	—	—	—	—	—			52	80	88 72	13
34	6	33	4.5	7.5	4.1						
—	—	—	—	—	—	79	120	120 104	16		
37	6	38	4.5	7.5	4.1						
—	—	—	—	—	—	90	140	180 145	20		
42	8	43	5.5	9	5.1						
—	—	—	—	—	—	100	160	340 300	25		
50	8	51	5.5	9	5.1						
—	—	—	—	—	—	160	279	470 375	30		
58	10	60	6.6	11	6.1						
—	—	—	—	—	—	170	320	650 560	35		
64	10	67	6.6	11	6.1						
—	—	—	—	—	—	220	410	1,060 880	40		
75	13	78	9	14	8.1						
—	—	—	—	—	—	390	810	2,200 2,000	50		
92	13	98	9	14	8.1						
—	—	—	—	—	—	479	1020	3,000 2,560	60		
106	18	112	11	17	11.1						